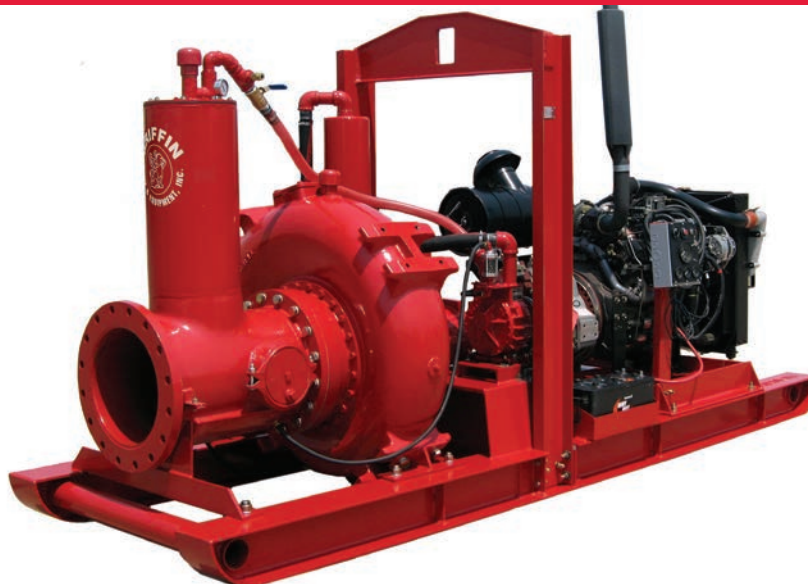


GRIFFIN

18" Non-Clog Pump

Model: 18NCRD



MODEL FEATURES

- Fully automatic, dry priming and dry running, self-contained, portable pump, non-clog pump unit
- Handles large volumes of air, water, and trash
- Operates efficiently under intermittent flow conditions
- Automatically primes and re-primers at suction lifts of 25 feet or greater
- Easy to access suction clean-outs for inspection and removal of debris while connected to the system

PUMP

SIZE: 16" x 16" x 22.5"
CASING: Class 30 cast iron
IMPELLER: 2-port enclosed, non-clog, ASTM A48 class 30 cast iron
SEAL: Tungsten-Carbide Cycloseal for dry running and abrasive resistance
SUCTION WEAR PLATE: Cast iron
SHAFT: 17-4 ph shafting
SOLIDS HANDLING: 4.5"

ENGINE

MAKE: International
MODEL: T444
TYPE: 8-cylinder Overhead Vee, 4-cycle water cooled, turbo charged diesel
DISPLACEMENT: 444 cu in.
GOVERNOR: Electronic

LUBRICATION: Constant pressure, full flow
AIR CLEANER: replaceable dry element
ELECTRICAL SYSTEM: 12V DC
SAFETY SHUTDOWNS: High head temperature, low oil pressure
MANUFACTURER'S PERFORMANCE: Rated Power - nominal hp (kW)
intermittent: 230
Rated speed - rpm: 2300

VACUUM PUMP

MODEL: Wallenstein
TYPE: Rotary vane, air cooled, oil lubricated
CAPACITY: 94 cubic inch SCFM @ 850 rpm nominal
CASING: Class 30 cast iron
ROTOR: Class 30 cast iron with self-adjusting, Ferobestos @ vanes

VACUUM PUMP OIL RECLAIMING SYSTEM

CONSTRUCTION: carbon steel
OIL FILL LEVEL: 10 gallons
VOLUME: 3000 cu in.
OIL COOLER: integral to air separation chamber

AIR SEPARATOR

CONSTRUCTION: Carbon steel
FLOAT ASSEMBLY: Direct-acting stainless steel float with stainless steel support and corrosion-resistant components

FLOAT SIZE: 636 cu in.
AIR DOME: Bronze with nylon valve seats and polypropylene backflow preventer check ball
VALVES: Nylon, replaceable
VACUUM RELIEF VALVE: 50 CFM

STANDARD FITTINGS

DISCHARGE: 16" flange
INLET: 18" flange
DISCHARGE VALVE: Non-return swing check valve

STANDARD EQUIPMENT

- Center point lifting bail
- Battery box
- Vacuum gauge with liquid filled, stainless steel case
- Speed-reducing marine transmission with hydraulic clutch

PHYSICAL DIMENSIONS

WEIGHT: 9,000 lbs
LENGTH: 170"
WIDTH: 50"
HEIGHT: 78"

In the interest of product improvement, specifications may change without notice.

GRIFFIN

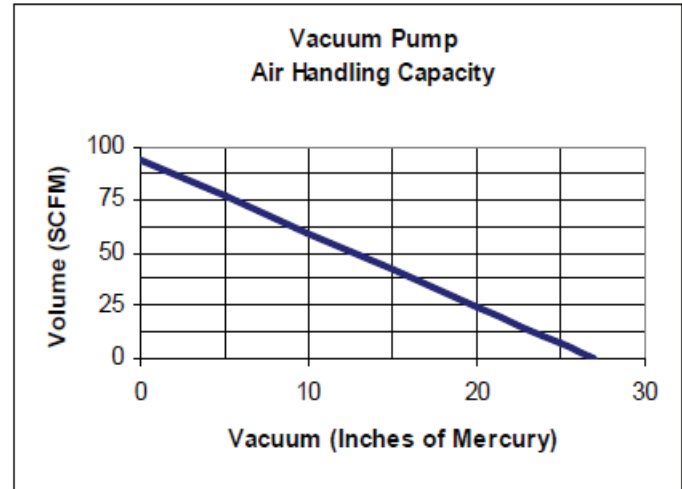
Griffin Dewatering, LLC

5306 Clinton Drive, Houston, TX 77020
(713)676-8000 Fax: (713)675-4820
web: www.griffindewatering.com
e-mail: rachel.smith@griffinpump.com
© Copyright Griffin Dewatering, LLC 2021

18" VARIABLE-USE NON-CLOG PUMP

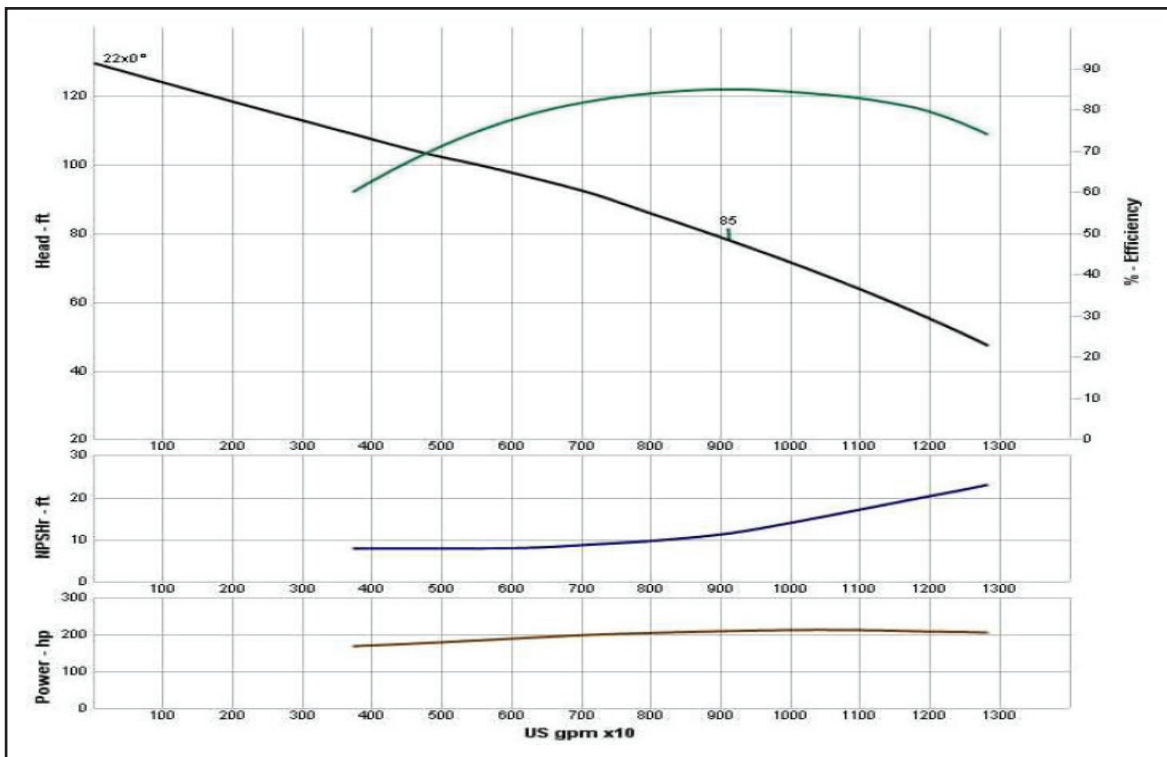
MODEL: 18NCRD

- Vacuum assisted, self-priming
- End suction
- Non-clog
- Centrifugal pump



Driver RPM: 1800
Driven RPM: 850

Horsepower: 5
Type: Rotary Vane



In the interest of product improvement, specifications may change without notice.

GRIFFIN

Griffin Dewatering, LLC

5306 Clinton Drive, Houston, TX 77020
(713)676-8000 Fax: (713)675-4820
web: www.griffindewatering.com
e-mail: rachel.smith@griffinpump.com
© Copyright Griffin Dewatering, LLC 2021